

## Quality Solutions for Air Cargo Handling



for deck, dollies and loaders

# Colson Europe Cargo Castors



Cargo Castors are essential components used in ULD handling environments at airports worldwide. You can find our silent and maintenance free products in logistic cargo centers. But also on Ground Support Equipment (GSE) like dollies and loaders on the ramp our products are used intensively.

The current Colson Europe BV Cargo Castor is a result of continuous development and improvements. We emphasized our products for the extreme conditions found in ULD handling. This results in a product which endures the shock, load and temperature fluctuations at airports worldwide more than any other product. Even in perishable-cool storage facilities our product feel at home.

## Composition of a standard Cargo Castor



- A** toe-guard
- B** special engineered low wear impact-resistant polyamide 6.6 wheel
- C** maintenance free sealed ball bearing
- D** plastic sealing cap drains water and prevents corrosion
- E** integrated steel thread guard protects prevents blocking of the wheel
- F** robust deep drawn pressed steel fork with special anti-corrosion zinc coating
- G** labyrinth-seal protects the swivel head for dust and water

The Colson Europe Cargo Castors are

- extreme wear and shock-resistant
- enabling real easy handling over a long period of use
- absolute maintenance free for its full lifetime
- guaranteed worldwide use all over the years by its premium quality

**Colson Group Europe**

[info@colson-europe.com](mailto:info@colson-europe.com)

## Standard cargo castors



Standard Cargo Castors are used mainly on dollies and loaders

## Cargo Castors with toe-guard



A **toe-guard** prevents operators to step into the holes present in the top deck area while walking over them, pushing the ULD's.

The applicable H&S regulations usually enforce the use of these preventive devices



**Standard cargo castors with attached toe-guard** are generally used on decks and occasionally on dollies and loaders as well



**Standard cargo castors with attached toe-guard** are generally used on decks.

**Colson Group Europe**

[info@colson-europe.com](mailto:info@colson-europe.com)



# Cargo Castors

## Main features

Castor load capacity : 250 kg

Standard temperature range : -30°C to +80°C

We advise to mount our products onto a flat and sturdy mounting surface to ensure a rigid support for the complete topplate area of the castor.



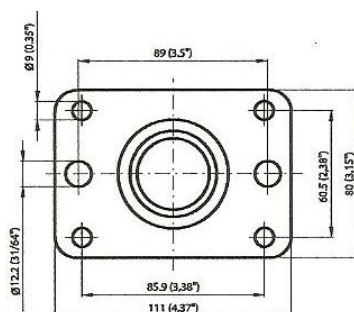
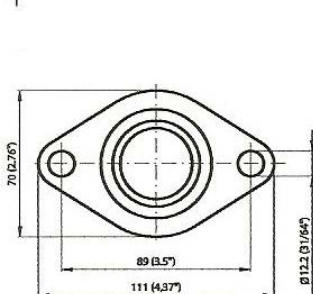
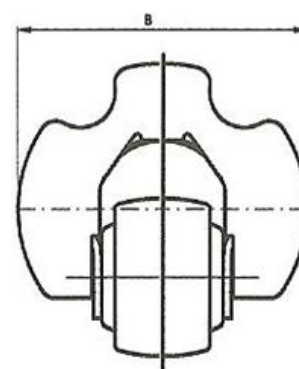
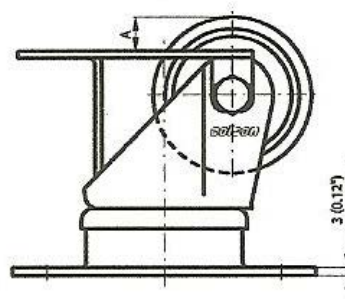
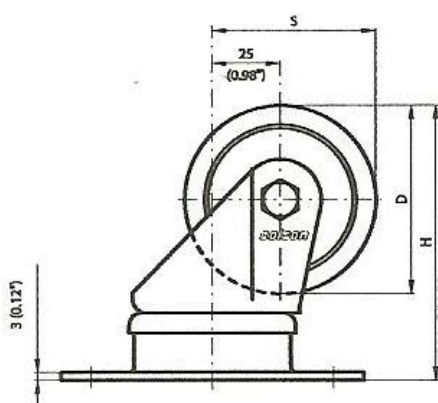
### Standard Cargo Castors

|                  | D  | B  | H   | S  | diamon<br>d | rectangular |
|------------------|----|----|-----|----|-------------|-------------|
|                  | mm | mm | mm  | mm |             |             |
| JBPN 058-CC1/A   | 58 | 35 | 96  | 54 | X           |             |
| JBPN 058CC1/A-R  | 58 | 35 | 96  | 54 |             | X           |
| JBPN 070-CC1/A   | 70 | 35 | 102 | 60 | X           |             |
| JBPN 070-CC1/A-R | 70 | 35 | 102 | 60 |             | X           |



### Standard Cargo Casters with integrated toe-guard

|                     |    |    |     |    |             |             | A  | B   |
|---------------------|----|----|-----|----|-------------|-------------|----|-----|
|                     | D  | B  | H   | S  | diamon<br>d | rectangular | mm | mm  |
|                     | mm | mm | mm  | mm |             |             |    |     |
| JBPN 058/2187171    | 58 | 35 | 96  | 54 |             | X           | 19 | 120 |
| JBPN 058CC1/ATLP16  | 58 | 35 | 96  | 54 | X           |             | 16 | 107 |
| JBPN 058CC1/ARTLP16 | 58 | 35 | 96  | 54 |             | X           | 16 | 107 |
| JBPN 070CC1/ATLP22  | 70 | 35 | 102 | 60 | X           |             | 22 | 107 |
| JBPN 070CC1/ARTLP22 | 70 | 35 | 102 | 60 |             | X           | 22 | 107 |



diamond top plate

rectangular topplate

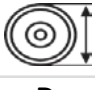
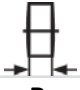


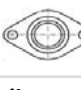
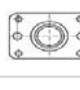
**Colson Group Europe**

info@colson-europe.com

# Cargo Castors



**Standard Cargo Castors with attached toe-guard**




|                      |  |  |  |  |  |  |      |     |
|----------------------|---|---|---|---|---|---|------|-----|
|                      | D   | B   | H   | S   | diamond   | rectangular   | A    | B   |
|                      | mm  | mm  | mm  | mm  |   |   | mm   | mm  |
| JBPN 058CC1/AT12,7   | 58  | 35  | 96  | 54  | X   |   | 12,7 | 107 |
| JBPN 058CC1/A-RT12,7 | 58  | 35  | 96  | 54  |   | X   | 12,7 | 107 |
| JBPN 058CC1/AT16     | 58  | 35  | 96  | 54  | X   |   | 16   | 107 |
| JBPN 058CC1/A-RT16   | 58  | 35  | 96  | 54  |   | X   | 16   | 107 |
| JBPN 070CC1/AT12,7   | 70  | 35  | 102   | 60  | X   |   | 12,7 | 107 |
| JBPN 070CC1/A-RT12,7 | 70  | 35  | 102   | 60  |   | X   | 12,7 | 107 |
| JBPN 070CC1/AT18,7   | 70  | 35  | 102   | 60  | X   |   | 18,7 | 107 |
| JBPN 070CC1/A-RT18,7 | 70  | 35  | 102   | 60  |   | X   | 18,7 | 107 |
| JBPN 070CC1/AT22     | 70  | 35  | 102   | 60  | X   |   | 22   | 107 |
| JBPN 070CC1/A-RT22   | 70  | 35  | 102   | 60  |   | X   | 22   | 107 |

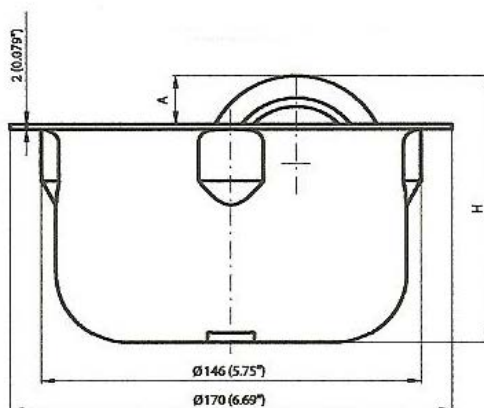
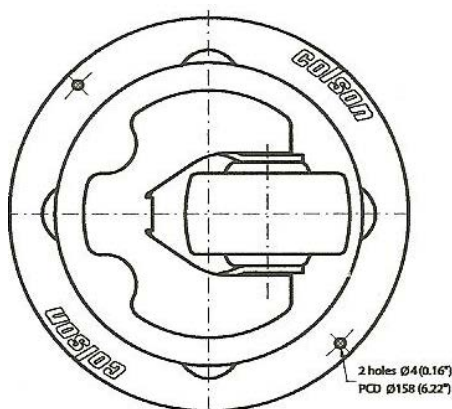
## Mobra

mounting bracket with a standard cargo castor and an attached toe-guard

- Ease of installation and replacement
- Cost-effective construction of the deck
- Clean deck - debris cannot fall under the deck area.



|                |  |  |      |     |    |  |
|----------------|---|---|------|-----|----|---|
|                | D   |   | A    | H   | S  |   |
|                | mm  | mm  | mm   | mm  | mm | kg  |
| MBPN 058 MOBRA | 58  | 35  | 12,7 | 98  | 54 | 200   |
| MBPN 070 MOBRA | 70  | 35  | 18,7 | 104 | 60 | 200   |



**Colson Group Europe**

info@colson-europe.com



The Colson Group produces wheels and castors for many industrial applications.  
Colson Group Europe, The Netherlands is particularly known for producing top quality Cargo Castors.  
Apart from these, we also supply castors for Air Craft Docking systems, Hose support castors on Fuel trucks and wheels for luggage trolleys in the terminals on airports worldwide



Our main catalogue contains more than 200 pages of castor solutions for all your applications.  
Please contact us for a hardcopy or download from the web.



## Colson Europe

Coöperatief U.A.  
3900 AK Veenendaal  
The Netherlands

**p** +31(0)318 53 66 11  
**m** info@colson-europe.com  
**w** www.colson-europe.com

